

Hunshelf Chat

Issue 79 - December 2014

Contents

Christmas Tea	1
Barnsley Draft Local Plan	2
Hunshelf Dig	3
Goodbye	3
A Christmas Walk	3
When Hunshelf Defended Britain	4
Poetry by Freda Watts	5
Community Spirit	5
Nature Table	6
Hebridean sheep on isle of Skye	7
Parish Matters	8
Nature Table	5
Green Moor Sports Club	9
What's On	10
A Christmas Carol	11
Children's page	12

Stories throughout this newsletter are written by residents of the parish of Hunshelf. Anyone who would like to contribute articles, information, events or photographs, please contact the Editor, Claire Derrick, on 0114 288 7903 or email claire.derrick@virgin.net

Deadline for the next Hunshelf Chat is 15 February 2015



© Peter Garrity

Are you ready to Step up to Serve at the Senior Citizens Tea?

**Saturday, 6 December, 2014
volunteers to be on duty from
5.15 to 7.00pm**

If you are aged 11 to 63 years old, come and help kick start the Christmas festivities for all our really old parishioners.

At last year's event, our teenagers really did 'Step up to Serve'. They welcomed guests; helped with coats and seating; served the buffet; cleared plates;

topped up drinks; even did washing up... and then...when the entertainment didn't arrive... stepped up to entertain as well!

Thomas Oxley stole the show with his jokes and conjuring. Well done also to Sara Kerr and Melissa Oxley. Our thanks to you all.

The Parish Council will issue a certificate or letter of completion for your services along with a photograph if needed for your Record of Achievement.

Stay on from 7.00 – 8.45pm to be entertained by Thurgoland School Choir followed by the Green Moor Singers; wash up, or prepare and serve tea, coffee and mince pies from about 8.45 to 9.15pm.

**To Step up to Serve, contact:
Kathryn Austin on 0114 2885888 or
kathryn@rockhousefarm.co.uk
Claire Derrick on 0114 2887903 or
claire.derrick@virgin.net**

Barnsley Draft Local Plan Consultation Draft 2014

Barnsley MBC is presently involved in setting the Local Plan for our parish and the rest of the Barnsley Borough. This is a most important step as the Local Plan for Barnsley will direct the development of all aspects of life in our area over the foreseeable future (up to 2033). The five Hunshelf Parish Councillors and some volunteers are presently scrutinising this plan to see what effect it will have on our parish and on the lives of our residents. There is to be a meeting on Thursday 11th December in the Providence Room at 7:45 p.m. to finalise the submission to Barnsley from Hunshelf.

Anyone who has any concerns, ideas or just wishes to know what is going on should contact one of the parish councillors as soon as possible. You can also look at the plan on-line on the Barnsley MBC web site

The following item has been received from the Planning Department at Barnsley



BARNSELEY METROPOLITAN BOROUGH COUNCIL

Barnsley Council is producing a Local Plan for Barnsley which will replace the Core Strategy and the Unitary Development Plan. The consultation period for the draft Local Plan began on 10th November and runs until the 21st December. Comments are invited on the draft document, which will guide development in Barnsley up to the year 2033.

The Consultation Draft Local Plan sets out policies and allocates a number of sites to provide sufficient land to accommodate the aspirations for economic and housing growth in Barnsley between 2014 and 2033. This proposed round of consultation will provide the opportunity for local communities, businesses, prospective developers and all other stakeholders including neighbouring authorities to provide their views on the proposals in the Plan.

The most critical issues that the Consultation Draft Local Plan seeks to address is the:

- Allocation of sites for employment to accommodate around 32,000 jobs.
- Allocation of Sites for around 20,300 new homes
- A reduction in Green Belt land across the Borough of around 2.5% to help achieve the above.
- Identification of necessary infrastructure.
- Allocation of permanent sites for 35 pitches to meet the current unmet need.
- To secure appropriate high quality development and to protect and enhance what is special about Barnsley and its environment.

Green Moor is washed over with Green Belt (as it is in the current Unitary Development Plan) and if you look at the map on-line you will also see the relevant Biodiversity or Geodiversity interest site.

The current indicative programme to the progress of the Local Plan is:

- Consultation on the draft document November – December 2014
- Consultation on the Publication version - July 2015
- Submission to the Secretary of State - November 2015
- Public Examinations January/February 2016
- Adoption Spring 2016

It is important to have an up to date development plan to guide decisions on planning applications and to give certainty to developers and landowners. Once adopted the Local Plan, together with the Joint Waste Plan will become the statutory development plan for Barnsley and all decisions on planning applications should then be made in accordance with it.

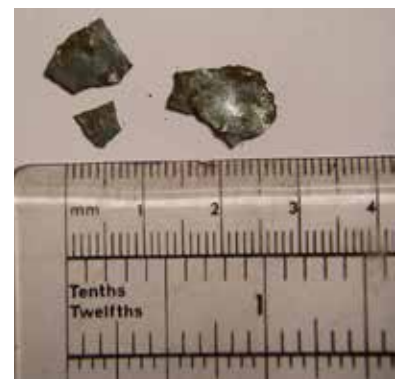


Hunshelf Dig



Thanks to all those who helped (especially during the pouring rain) during the two weeks in October when we carried out an archaeological excavation of the Tin Mill remains. We await the archaeologists' report, particularly on the hundreds of samples taken, but we are pretty certain we found the working floor and some support structures of the rolling mill. On this floor there were thousands of shiny pieces of hot-metal rolling scale (photo), presumably from the century and a half of working hot metal. We also excavated one side of one of the wheel pits, so we now know the position of the shaft which drove the rolls. Two other areas of the mill were looked at, and we await the interpretation of these. The report will be attached to the Hunshelf Parish Council webpage for all to see when available.

Barry Tylee



Thank You All

We are leaving the area. Doreen was diagnosed with Parkinson's a while ago and while it isn't affecting her too much our children are concerned and want us to move nearer them. (Makes me feel guilty now because we moved up here into the wilds hoping our kids wouldn't find us, but they did) We have a son in Grenoside and a daughter in Chapeltown. We are moving to a bungalow in Grenoside and will be quite close to our kids. Not only that 2 of our grandchildren literally walk past the bungalow on their way to and from school. What could be nicer than that?

Doreen and I would like to sincerely thank the many people for making us feel so welcome. We have experienced nothing but kindness and friendship and will always remember the folk on the hill.

Best Regards
Tony and Doreen Oakley



**Stocksbridge
Walkers are
Welcome**

A Local walk for Christmas!

This area offers many opportunities for walks which include both extensive views and sites of historic interest. A number of possibilities are provided by Stocksbridge Walkers are Welcome. For example, one of their walks encompasses both Hunshelf Bank and Green Moor. This is an undulating walk of 5 or 6 miles. It commences at the Trans Pennine Trail (TPT) car park at Cote Green (SK 299 993) before going over Hunshelf Bank to Green Moor then dropping down into the Upper Don Valley. It then climbs up to the TPT before passing under the Rumtickle Viaduct. Then follows to option of either passing Huthwaite Hall or going under the tunnel. The walk

returns via the banks of the River Don and open farmland.

The route passes sites of historical interest including quarries, mills, railways and old houses. These include Chemistry Cottages, Delph Quarry, the Huthwaite Tunnel, Romticle Viaduct and Wortley Station. Also included are two sets of stepping stones and at Green Moor the Ivy Millennium Green, the lending library, the pump house and the stocks.

The instructions include many pieces of historical information. For example, as you pass under Romticle Viaduct, look carefully at the inside of the arches. Near the top is a memorial stone. Whilst building the viaduct in 1844, a stone fell and killed a navvy, William Crawshaw. His workmates later built this memorial stone into the structure.

Detailed instructions, including historical details are available at: www.stocksbridge-walkers.org.uk then local walks/walk 8.

Dave Pickersgill

When Hunshelf defended Britain (Part Two)

Continuing the story from the last issue of *The Hunshelf Chat*, this article gives more information about sites mentioned in Part One

The Signal Box on Windy Bank

There is no sign on the ground of this structure. Even the foundations of several buildings on Windy Bank from this era have been grubbed out by the farmer. According to Mr Graham Godley of Hill Top Farm, he cannot remember the signal box, but does recall that the same field was the location of some 40 mm Bofors guns, sited to protect the steel works in Stocksbridge. The field is known in the Godley family as "Gun Pit Field"



Bofors Gun similar to those on Windy Bank. Bofors was a Swedish firm, now part of BAE Systems

Stocksbridge Tower (Tata Steels)

This is still there and is at the centre of the new development. The photo shows the tower and the clock tower. It was recalled, again by Mr Graham Godley, that this was the location of the Home Guard and ARP during the war



Stocksbridge Works Tower, Home Guard HQ

The Observatory (Bolsterstone Lookout Post)

The lookout post is still referred to as the "Observatory" in Bolsterstone. On private land belonging to Mr Gordon Webster of Castle Farm, Bolsterstone, the red brick building that was used as an observer post can be clearly seen from the road. It is now used only by cattle and the occasional walker sheltering from the elements. There was at one time a wood and glass structure on the top to allow for better sighting, and there remains the openings of two windows. The building continued in use after the war until the provision of a more modern construction at Edge Hill Lane which was made to resist the effects of a nuclear explosion

"The Observatory" from the Road



DB and WM Horsfall



What did the elf say who was teaching Santa to use a computer?

"Yule log in!"

Green Moor Baby and Toddler Group

Green Moor Baby and Toddler Group will be **closed** 18 and 25 December and 1 January 2015.

A Ladin' Can

A friend of mine wanted a ladin' can,
 So a ladin' can she set off to buy,
 An' she couldn't purchase one o' them things
 No matter how hard she did try.
 One shopkeeper said, "I don't know what yer mean",
 Some said, "We've sold out I fear",
 Others said, "We might get some in next week",
 One said, "We've had none for five year".
 So she traipsed off to Penistone Market,
 W eer't farmers all go for their stuff,
 She asked t' chap if he had a ladin' can,
 Be this time sh'd abaht had enough.
 She said "Do you know what I'm talkin' abaht"?
 He didn't half give her a wiggin'.
 He said, "O' course I know what tha' talkin' abaht,
 I'd a known if tha'd asked for a piggin'".

A Piggin'

An' talkin' abaht piggin's an' ladin' cans,
 It reminds me of a story I know
 Abaht a young lad at went to a farm
 To help wi't jobs, there wor plenty to do.
 This day he wor going to learn to milk,
 He wor feelin' reight pleased wi' his-sen,
 When it came to there wor no bucket for't lad,
 There wor only enough for't men.
 Farmer said "Thee go fetch't piggin
 If to milk tha goin' to learn how".
 An t' lad said "Well I expect there all alike,
 I might as well larn on a pig as a cow"!

Dialect poems by Freda Watts

22 August 1922 - 31 August 1997

Grass on You!

You may recall the article that was sent in for the last issue of the Hunshel Chat regarding grass cuttings being thrown over the wall at the bottom of Chapel Lane... well I can honestly say I haven't had such feedback on an article - ever!

Firstly, I had a visit to my house from a member of our community who was not happy with the article. The individual had looked in to the subject and seen that as long as there was both soil and earthworms in the mixture of grass cuttings it was OK to discard this as compost. This person was also upset that they had not been approached by the witness to let them know that they should not be doing this.

Then, within the week, I received an email from *another* member of the community 'fressing up (see comments to the right) and who was, as you can see, also somewhat disgruntled with the contents of the article. Am I seeing a pattern here?

I can't say I haven't enjoyed the controversy a little bit - well quite a bit actually - but the bottom line is that the landowner doesn't want the tipping to take place and so ends the discussion - for now - I think...

The Editor

COMMUNITY SPIRIT AT ITS BEST (or NOT)

Regarding the supposedly humorous and unsurprisingly anonymous 'GRASS ON YOU' item in the October Chat. I think I too recognise from this piece the 'resident' in question. I am guessing this is the same 'resident', who has lived in this village nearly all her life, is the one who regularly cuts the grass verges all the way through the main thoroughfare from the stile to the playground and also keeps her garden looking immaculate showing consideration for the neatness and tidiness of the village.

Something which I would hesitate to suggest is also quite community spirited. So what if she puts the cuttings over the wall, anyone who was brought up in this village would know that the drop is approx 15' straight down and consists solely of garden waste and grass built up over many, many years. This has never harmed any livestock and wouldn't hold the weight of an adventurous chicken even if such a creature wished to avail itself of aforementioned cuttings.

Over the years have we seen a flourish of dead and dying beasts strewn around the trunche? God forbid! nor will there be even if somebody decides to breed bloody miniature mountain goats.

Whoever wrote this article wants to grow a pair. Is this their idea of what should be in a community newsletter? Real Greenmoor people I'm sure, would rather be approached in an upfront and honest way over such an issue instead of this weak kneed, lily livered cowardly manner. Grassers or Informers are also known as squealers, noses, moles, snouts

and stool pigeons. These terms invoke imagery of covert snooping around and of talking behind someone's back. Grass is less intuitive. It could just have arisen from 'snake in the grass', which derives from the writings of Virgil (in Latin, as 'latet anguis in herba') and has been known in English, meaning traitor, since the late 17th century. This hardly evokes images of community spirit.

On a lighter point would anyone wish to prevent such hilarity as seeing the late great Jimmy Birch depositing his grass cuttings, wheelbarrow and himself head over heels heading southwards, I think not.

If anyone would like to debate this or any other issue with me (face to face) I will happily oblige, you see I am (probably, if I have guessed right) married to this 'resident'. Grow up or go back to whence you came.

Name and address withheld. Steve Cheetham 2 The Old School. (oops that's given the game away).

Nature Table

Watch out for Winter Visitors



Greylag Goose

It's that time of year again and we have already been joined by our avian friends from Northern Europe and Siberia as they head South and West to over-winter and take advantage of our relatively milder climate and feeding opportunities.

Thrushes

Redwing are already here and at the time of writing I have seen several birds in Green Moor. They can often be found feeding on bushes and trees bearing berries or in surrounding fields on insects and invertebrates. Essentially they resemble a song thrush however are slightly smaller, have a darker upper body and have a distinct pale eyestripe. As the name suggests they also have a fairly prominent red flank and underwing. In terms of voice this bird is most commonly heard in flight when it utters a low-pitched "seep" call. Although we consider this

thrush to be a winter visitor it has been known to breed in the UK, mainly in the North of the country.

Fieldfare are larger birds, similar in size to a Mistle Thrush, but with slightly longer tail and striking plumage. They have a blue-grey head, chestnut back, grey rump and black tail. They also have a heavily speckled breast and white underwing. These are very noisy thrushes with the most commonly heard call a harsh "chack chack chack". You tend to see these birds most commonly in fields in large groups often mixed in with Redwings. A good place to see them would be in fields between Chapel Lane and Hunshel Hall although many fields in the area can produce good numbers.

Waxwing

Bohemian Waxwings regularly visit the UK in the winter months, some years can be a mini invasion, although others can

be unremarkable with just a few birds present. 2012 was a "Waxwing winter" with hundreds in Sheffield and Barnsley however last year was poor in comparison. This species occurs in suburbs, parks and gardens where berries are the principal attraction and these birds gorge themselves often in large gregarious flocks. An interesting event took place in Sheffield in 2013 when a number of Waxwings were found dead in mysterious circumstances. The most credible theory related to alcoholic poisoning due to overripe berries!

The Waxwing is very similar in size and shape to the Starling however is creamy brown in colour with an obvious crest on its head, chestnut crown and black bib under its bill. It has white or yellow fringes to its primary wing feathers, red waxy appendages to secondary wing feathers and a yellow band at the end of a black tail. It also has a grey rump with chestnut under-tail colour. So all in all a beautiful bird as you can see from the photograph taken at Asda, Sheffield.

It's not very likely that Waxwings will visit Hunshel but popular sites include Birdwell, Hemingfield, Asda at Handsworth in Sheffield and a particularly good site is Meadowhall Retail Park which attracts large numbers due to the various berry laden shrubs.

Starlings

Our own Starling population is boosted with European migrants during the winter months and spectacular "murmurations" (swirling and twisting flocks) can be seen at certain sites in the evenings as the birds prepare to settle down to roost for the evening. A fantastic site to visit at the moment is Middleton Moor in Derbyshire

Redwing



Waxwing



Starling



where last year an impressive 50,000 birds were present.

Geese

Thousands of geese overwinter in the UK and movements across the country, in various directions from and to feeding grounds, are most common in Spring and late Autumn. Skeins (large "V" shaped formations) of geese pass over Hunshelf on a regular basis and normally relate to Pink-footed Geese or Grey-lag Geese. Locally at this time of year quite a number of Canada Geese are moving around the area and can normally be seen early morning or late afternoon. Other geese visiting the country include Greenland White-fronted and Barnacle which arrive in huge numbers to coastal estuaries and farmland.

Brambling

I have touched on this species before, which closely resembles a Chaffinch, but keep your eyes open this winter for the white rump and orange breast and shoulders of this attractive finch.

Others

You may not be aware but many Lapwings, Blackbirds, Robins and Jays seen during winter are foreigners, migrants from Northern Europe typically taking advantage of the richer and relatively warmer feeding grounds in the UK.

Images © Peter Garrity

Robin



Hebridean sheep found on The Isle of Skye

Do you ken?

The Parish Council has leased the Isle of Skye Paddock to Mr Joe Atkinson. Joe raises Hebridean Sheep, a conservation breed in more ways than one. The breed is a rare breed, but is also very often used by such as the National Trust to conserve land. It is this aspect of having these sheep on the Isle of Skye that most interests the Parish Council. The Paddock is ideal for these sheep and over the fullness of time the land may well recover to form a flower meadow. That is the hope and wish of the parish council and Joe is in agreement with this aim. We look forward to a flower filled future!

Joe plays cricket, appropriately for a sheep man, for Woolley. The Sports Club has agreed with Joe for him to use their access to the Isle of Skye, and for this we are very grateful. Our thanks go also to Bob Payne for his expert advice concerning sheep.

(At one time the parish council considered having Soay Sheep on the Delf. But this breed is so accomplished at getting out of fields, they make Houdini look a fumble fingered amateur!)



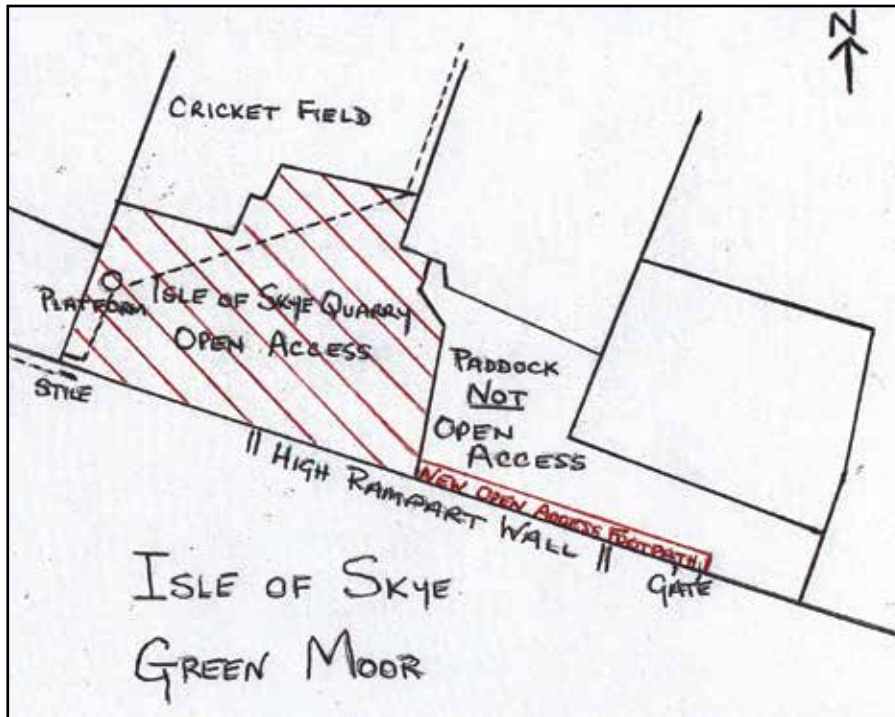
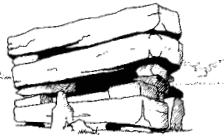
Hebridean Sheep are quite small, about two-thirds the size of normal sheep. They have black wool that is not very valuable as it is difficult to dye, but they are excellent animals to graze rough pasture. According to Mr Atkinson, they prefer rough grass and should make a difference to the Isle of Skye Paddock.



Who hides in the bakery at Christmas?

Mince spy!

Parish Matters



The Isle of Skye “Open Access”

The Paddock on the Isle of Skye is not “open access”. However, the parish council has realised that a footpath has appeared along the top of the retaining wall which overlooks Stocksbridge. This has implications for the parish council insurance and for the safety of users of the path. Three options were open to Hunshelf Parish Council.

- 1 Closing the path off with barbed wire.
- 2 Building a huge dry stone wall to protect users from a fall into the valley (Estimate £15,000!).
- 3 Dedicating a narrow strip of the Paddock as “open access”. It is this third choice that was agreed.

So, the Parish Council has informed Defra, Natural England and Barnsley MBC that this narrow strip of land some 3 metres wide from the quarry section of the Isle of Skye to the gate into Mr Clancy’s field is now free for all to roam. The fact that it is “open access” means users are much more responsible for their own safety. So, if you do venture onto this “open access” footpath, you do so at your own risk. Enjoy it.

The remainder of the Paddock is not “open access” and is leased to Joe Atkinson and his sheep.

Wortley Top Forge Christmas Event

A reminder that our scheduled Ancient Monument is host to an event on Sunday 7th December from 11:00 a.m. til 4:00 p.m. We are informed that the Barnsley Twin Town Society will be selling mulled wine and Stollen.

Well Hill Kerbs

We are still waiting for Barnsley Highways to give us a date for starting this project on Well Hill.

Replacement of the Parish Notice Board

The Friends of the Isle of Skye have acquired a grant of £500 from the Bridge Community Shop, Stocksbridge towards a new noticeboard for the community. The Area Forum has been asked for a further grant and it is likely that a new board will be in place early next year. It will have separate sections for the parish council and its legal notices, the community and the church. As we will need to order a number of keys, would any regular user of the community section of the board who thinks they may need a key, please let the Clerk know so that he can arrange for the right number of keys to be supplied.

Christmas Entertainment and Tea

This is to be held on Saturday 6 December at 5:30. Anyone who has been missed off the list of invitations, please ring 0114 288 3684 so that this error can be rectified.

Playground Inspection

The annual independent playground inspection threw up two concerns. One is that the closer on the gate is too quick and this is to be sorted out by two of the councillors as soon as possible. The other was the state of the wall at the back of the playground. An independent surveyor inspected this and has made a report. Basically, the wall is sound but should be inspected every month. The brambles at the base of the wall should be kept to discourage anyone from going up the bank. The wall will have to be rebuilt sometime in the future. As this will cost some £500 to £600, I feel another Area Forum grant application coming on!

Hunshelf Singers

The carol practices are in full swing and the performances are scheduled for Monday 22 December in the Bridge Inn in Thurgoland and Tuesday 23 December round the parish. Details form Chris Johnson 0114 288 5510.

Changes

We welcome some new residents and regretfully note that some are leaving. We wish both the “comers in” and the leavers all the best and hope they enjoy their change of residences.

Remembrance Service

The Remembrance Service on Sunday 9th November was well attended. The minister remarked on how beautiful the Ivy Millennium Green was in the sunshine. We remembered particularly the fallen from our parish, Frank Brammall (WW1) and David Marsh (Afghanistan). We would like to offer our most sincere thanks to Brenda Mangham and the Green Moor Methodist Church for the excellent refreshments after the Service.

Grounds Maintenance

Our thanks go to the volunteers who recently cleared some of the paths in the Delf.

David Horsfall, Clerk to Hunshelf Parish Council



Green Moor Sports Club

We held our annual presentation evening at Cubley Hall on 22 November. Graham Godley - who along with his family have supported the club over many years - presented the awards. 76 people attended (see award winners list to the right).

It is a quiet time now for us until the winter nets start again at Penistone Grammar School in January. We have applied and been accepted into the Barnsley Sunday league next season as well as our usual two teams in the Saturday Huddersfield central league. We also plan to have an U'9 team as well as our U'17, 15, 13, and U'11.

We thank you for your support over the last season and wish you all a happy Christmas.

Ann Matthewman
Secretary

G.M.C.C Trophy winners 2014

H.C.C.I

Premier league

Batting	R Saini
Bowling	S Askey
Catching	J Ridgewick
Man of the Match	R Saini

Sec B

Batting	A Howe
Bowling	J Haigh
Catching	Jamie Bates
Man of the Match	G Howe

U'17

Batting	G Howe
Bowling	J Bates
Catching	J Goddard
Man of the Match	J Middleton

Young player of the year

Jamie Bates

Spoon

Ian Askey

Jean Fieldsend Trophy

Joe White

Champagne moment 1st
L Burkinshaw

For hitting the last ball of The innings to gain all batting points

Champagne 2nd

J Haigh



'The National Hill Climbing championships were held on Hunshelf Bank this year on the 26th October. Over 250 brave (but very fit souls) battled the strong winds to race against the clock to the top.'

You can see the Hunshelf Chat on Stocksbridge Community Forum website:
www.stocksbridgecommunity.org/news



Why was Cinderella so bad at football?

Because she kept running away from the ball!

What's on

Penistone Paramount

For details contact 01226 767532
www.penistoneparamount.co.uk

CINEMA

Frozen Sing Along 2D

14 December, 12pm and 3pm

Merry Christmas (Joyeux Noel)

14 December, 7.30pm

Die Hard

15 December, 7.30pm

White Christmas

16 December, 2pm and 7.30pm

It's a Wonderful Life

17 December, 2pm and 7.30pm

The Great Escape

18 December, 7.30pm

Nativity 3: Dude, Where's My Donkey?

24 December, 4.45pm

Paddington

28 December, 11am

Night At The Museum: Secret Of The Tomb

4 January, 2pm

Penguins of Madagascar 3D

4 January, 4.45pm

Exodus: Gods and Kings 2D

4 to 7 December, 7.30

The Hobbit: The Battle of the Five Armies 2D

9 to 15 January, various times

LIVE EVENTS

Forty Years of Abba

performed by GimmeABBA

6 December, 7.30pm

Last Laugh Comedy Club

12 December, 8pm

Grand Christmas Concert

13 December 7.15pm

Robin Hood and Babes in the Wood

29 January to 7 February, various times

The Venue

For details contact 0114 283 8692

www.thevenuestocksbridge.co.uk

Panto - Dream Team Theatre Company presents Dick Whittington

5 December, 7pm. Tickets Family £16
Adult £5.50 & Child £4

Indoor Car Boot

6 December, 9.30pm

Bon Jovi Uk

12 December. Tickets £10 advance £12 on the door

FREE Family Xmas Disco

19 December 6pm -10pm - all ages welcome - dancing, games and prizes

Brass and Carols with Deepcar Brass Band

22 December 7.30pm. Tickets £6 each

Indoor Car Boot

24 January, 9.30am

Ring 0114 2838692 to book we accept cheques, cash or card payments (additional 50p charge) or email us on Deborah.frith@thevenuestocksbridge.co.uk

Wortley Hall

For details contact 0114 288 2100

www.wortleyhall.org.uk

Traditional Christmas Market

Sunday 30 November 2014 10am - 4pm.
Free Admission

Christmas Choir and Carvery

9 December from 6pm
£13.75 per person £8.95 per child under

12. £5 per person deposit

Senior Citizen Lunch

10 December from 12 noon
12.30pm lunch £12.95 per person
£5 per person deposit

Santa Carvery

14 and 21st December from 12 noon
£13.75 per adult £8.95 per child. £5 per person deposit

Christmas House Tour

15 December 7.30pm arrival for an 8pm tour. £5.95 per guest. Full payment required at the time of booking

Brass Band and Carvery

18 December from 5.30pm
£13.75 per person £8.95 per child under 12.

Masquerade Night

Friday 19 December 7.30pm
Dinner and swing band £29.95 per person.
£5.00 per person deposit

New Years Eve Dinner and Dance

31 December at 7pm

Civic, Barnsley

Dick Gaughan Live

Friday 5 December. 8pm. Full Price: £12/
Concessions: £10

Toby Foster's Last Laugh Comedy Club

6 December, 8pm. Full Price: £12

Horse + Bamboo Theatre: Hansel & Gretel

9 December - 14 December, various times. Recommended for ages 5+. Full Price: £10/Concessions: £8/Children: £6

Off The Kerb Productions: Mark Steel's Back in Town

Recommended for ages 15+. May contain strong language.
17 December, 8pm. Full Price: £15

Check the event websites for further information

Brother Wolf: A Christmas Carol - As told my Jacob Marley

18 December, 7.30pm. Recommended for ages 7+. Full Price: £12/Concessions: £10/Children: £8

Richard Durrant: Christmas Guitars

19 December, 7.30pm. Venue: Assembly Room. Full Price: £12/Concessions: £10

RPS: International Images for Science Exhibition

20 December – 7 February 2015, Venue: Gallery@ FREE admission

Topsy Turvy Theatre proudly presents: The Lost Present... A Christmas Adventure

21 December - 24 December, various times. Recommended for ages 2 – 7. Full Price: £10 / Concessions: £8 / Children: £6

Townsend Productions: United We Stand

30 January, 7.30pm. Recommended for ages 11+. Full Price: £12/Concessions: £10

Toby Foster's Last Laugh Comedy Club

31 January, 8pm. Full Price: £12

Miscellaneous**Holmfirth Farmers' Market**

Third Saturday of every month.

Penistone Farmers' Market

Penistone Market, second Saturday of every month.

Your Church

Green Moor Church is part of Churches Together in Stocksbridge and District and follows the Methodist Tradition of worship.

Sunday School, every Sunday at 9.45am except on the third Sunday of the month when we have a **Family Service** at 10am.

Morning Worship is at 11am - again except when we have a Family Service.

7 December, 10am, **Children's Nativity** and at 2pm a **Community Carol Service** in St Matthias Church Stocksbridge.

14 December at 11am there will be a Service and at 3.30pm a **Christingle**.

22 December at 6pm is our **Local Carols Service**

Green Moor Carols

Its not too late to join us in our carol singing rehearsals and tour of the Parish and The Bridge Inn sing. We meet on Mondays in The Providence Room, Chapel Lane, Green Moor, between 7.00 and 9.00pm. Our first rehearsal was Monday November 10 and our last one will be on Monday 15 December. We will be going round the parish on Tuesday 23 December to sing inside or outside people's houses. We will also be singing in the Bridge Inn, Thurgoland the night before, 22 December.

Everyone is welcome to join us, especially those of you who are new to our community. We are not a choir, just a group of enthusiasts who like singing. CDs of the carols are available and this is a great help in getting to know the tunes. If you are unable to attend the rehearsals but would still like to sing you are very welcome to join us in The Bridge Inn or come with us around the Parish. Please contact Chris Johnson for more details on 07951 468471.

If you don't want to sing with us but would like us to visit your house on Tuesday December 23 please contact Doris Stubbs to arrange this on 07960 306539.



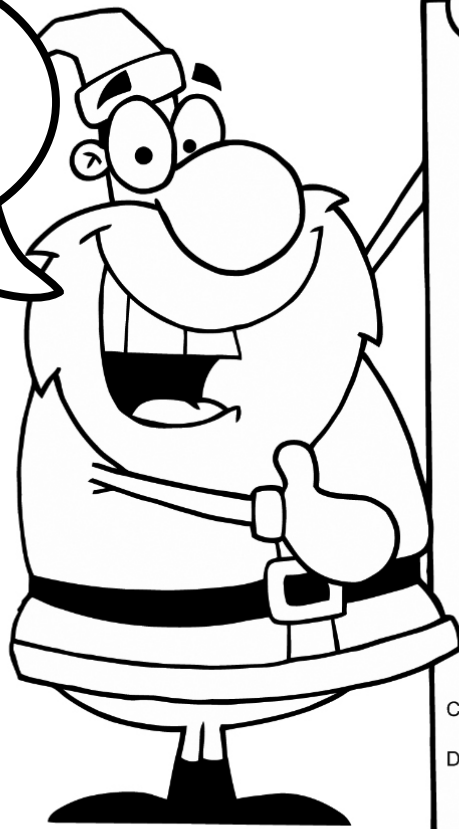
Did you know?

Did you know why Waldershef Mixed Choir is so named? It's a combination of Waldershaigh, near Bolsterstone and Hunshelf, combining the two ancient names of the hills on the opposite sides of Stocksbridge. Well fancy that!

Kathryn Austin

Merry Christmas

Colour
me in



www.kidscanhavefun.com

Christmas Santa Word Search

K Z D S T O C K I N G S W S Z
U E H P Q J Q H M T E N Z A P
R B R A R D X X R J O L U N J
K S T C V E E H B I N B T T M
D N T C Z G S C F T S E S A T
Y W J A A T P E E F R T S C A
X B Z S R N X U N M S E M L Y
B M G X Z M D F V T B L E A W
F I G Q W Z Q Y Y L S E A U S
P S L E I G H S G B B W R S Q

Christmas Presents Santa Claus Sleigh Tree Red
December Star Candy Stockings

