



# Hunshelf Chat

Issue 92 - March 2018

[www.hunshelfparishcouncil.org.uk](http://www.hunshelfparishcouncil.org.uk)

## Contents

Hunshelf Parish Assets	1
Nature Table	2
The Hidden Valley	3
Bird boxes	3
Bats in the Belfy	3
Hunshelf Parish Christmas Party	4
A concert for the fallen	5
Parish Matters	6
Walkers Are Welcome	7
In praise of the NHS	7
Green Moor Sports Club	7
What's on	8

Stories throughout this newsletter are written by residents of the parish of Hunshelf. Anyone who would like to contribute articles, information, events or photographs, please contact the Editor, Claire Derrick, on 0114 288 7903 or email [claire.derrick288@gmail.com](mailto:claire.derrick288@gmail.com)

**Deadline for stories for the next Hunshelf Chat is 15 May 2018**

## Hunshelf Parish Council

### Members:

Kathryn Austin  
 Kathryn Battye  
 John Kerr  
 Richard Popplewell (Chairman)  
 Barry Tylee

Contact via the Clerk on 0114 288 3684, email [oberwald7@gmail.com](mailto:oberwald7@gmail.com) or via the website [www.hunshelfparishcouncil.org.uk](http://www.hunshelfparishcouncil.org.uk)

## Hunshelf Parish Assets

Hunshelf parish is very fortunate in that the parish council owns a number of pieces of land, most of which are open for all to use. The Hunshelf Chat is one of the items that the Barnsley Borough Archives will keep, ostensibly, in perpetuity, so I thought it prudent to itemise the assets. Other assets are to follow in later editions of this newsletter.

### The first of our assets:

## Ivy Green

Ivy Millennium Green, to give it its full title, was once the paddock belonging to Rock Cottage. Mrs Ivy Bacon, when she downsized and moved away from the village, wished to make a contribution to the village she had lived in for many years and give the paddock to the parish. The late Neville Roebuck and a team of volunteers were involved in making the arrangements to hand over the land to the parish. After much discussion it was agreed that the paddock would become a Millennium Green (funds were available) and that the land should be vested in the parish council. In turn the parish council leased the Green to the Ivy Millennium Green Trust for an annual peppercorn rent of one bunch of daffodils. The lease was set for 999 years. Funds were found to have the walls rebuilt and the large stones put in place.

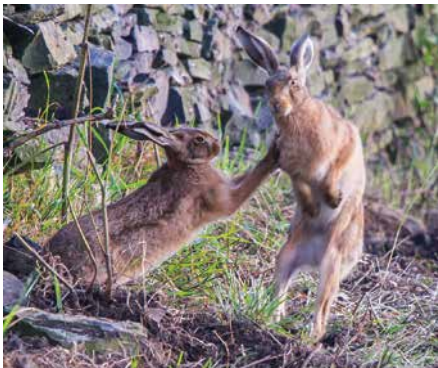
After the sad demise of Neville and with funding problems, the trust was wound up. The Charities Commission tried to take over ownership of the Green. As the land did not belong to the Trust but was only leased, this was not possible. It was agreed that the lease on the Green would be terminated and the parish council would take over the running of the area. Recently funds were sourced to replace the seats and tables and generally kept the maintenance up to date.

### David Horsfall, Clerk to the Parish



*Ivy Millennium Green from the story stones*

# Nature Table



## Boxing Around

**My word doesn't time fly! We are quickly heading towards spring and you can definitely see the signs in the gardens, with crocus already up, daffodils on the way and birds bursting into song earlier and earlier every day. Around the Parish a noticeable change is the movement and increasing activity of brown hares I have certainly seen individuals appearing in the usual fields around Hill Top Farm, Trunce, Hunshelf Hall, Peck Pond and further along around Dean Head.**

The phrase "Mad as a March Hare" relates to this increased activity, when the period leading up to and during the breeding season becomes a much more intense time of interaction between both male and female.

Brown Hares have declined significantly across the UK, in some areas as much as 80%, so it is important that we protect them and record sightings whenever possible.

The fascination of watching "boxing" hares never ceases to amaze me and I am still trying to capture this through the the camera lens. Let's hope I can share some images with you later this year. This behaviour is normally observed when the females (does) are resisting the amorous approach of the males or "bucks".

If you are wondering whether you are looking at a hare or rabbit then the distinguishing features for the brown hare are very long back legs, very long ears with black tips, a hare sprints whilst a rabbit hops and generally hares have a nomadic lifestyle and are generally found in large open fields.



**Peter Garrity**  
Images © Peter Garrity



# The Hidden Valley



A painting of the Truncheon Valley by local artist John Kerr has just become available as a limited edition print. The panorama depicts the view across the valley from Edgemount to Old Mill Lane with the Truncheon Farm at its centre. The original watercolour was painted in 1999 and the old caravan where Phyllis Crossland used to write her books is clearly seen in the field. The image has been reproduced in archival giclee inks on high quality, acid free paper. The image is window mounted with acid-free card ready for your choice of frame. Image size is 690mm x 215mm with the finished mount reaching 810mm x 310mm. Called the Hidden Valley, prints are available at £65 each. Contact the artist on 0114 2887903 if you are interested or would like to view the work.

## Designer bird boxes

**PEOPLE HAVE BEEN BUSY** painting and decorating bird boxes to sell in order to raise funds for Green Moor's Yorkshire in Bloom 2018 entry. Particular thanks goes to some very industrious children; Lara and Errin Allott, Dan Stevens and Freddie Birch who have given their time and skills. **If you would like to buy a bird box at a cost of £10 please contact Betty Allott on 07960 812362 or have a look at the stall outside Rock Cottage, (next to Ivy Millennium Green).**



*Brown long-eared bat – a little know Hunshelf resident*

## Bats in the Belfry?

**Most readers will surely have seen bats flying in their gardens or along Hunshelf's country lanes, however did you know this area may be one of South Yorkshire's best for bats? Hailing from Bradford, I was struck by the amount of woodland bordering the River Don as it passes between Thurgoland and Green Moor. Already a bat fan I was sure the place would be laden with these stars of the night sky and I was not to be disappointed.**

To date no fewer than seven of South Yorkshire's ten bat species have been confirmed as present, with other species likely to be recorded in coming years. Bats use this area year round, with significant breeding and hibernation sites known. This year one such bat roost was even designated a Local Wildlife Site by the council in recognition of its conservation importance.

If you want to see bats then you can do no better than to visit a site along the

River Don at dusk. In particular, buildings at Wortley Top Forge provide a home for at least four species of bat and the nearby river is alive with bat activity on any night of good weather from spring to autumn. The bats certainly have much to thank the volunteers of South Yorkshire Industrial History Society for!

On the river close to Wortley Top Forge you can reliably expect to see common and soprano pipistrelle exhibiting their jinking flight along the tree covered

banks, Daubenton's bat flying low over the water surface catching emerging insects with their feet and possibly Britain's largest bat, the noctule, flying fast and straight overhead.

Whilst much is known about Hunshelf's bats, South Yorkshire Bat Group would love to know more. If you are lucky enough to have a roost in your house and you are happy for to give us the location then please do send a note to [robert.andrew.bell@gmail.com](mailto:robert.andrew.bell@gmail.com)

## Hunshelf Parish Christmas Party December 2017

The annual Hunshelf Parish Christmas party was held in the Green Moor Church and Providence Room on 2nd December last. Attendance was comparable to recent years with approximately 25 children and 70 adults present.

Arrangements for the party followed previous years with children's entertainment, followed by a buffet served jointly to the children and adults, then adult entertainment, with the evening ending with coffee and mince pies accompanied by local carols from the Hunshelf Singers.

The Children's entertainment was again provided by Magic Daz and Miss Bumble of the Bumblezzz (award winning Children's entertainers twice during 2017). The Adults were entertained by the Decibelles, who provided the music two years ago and once again were happy to stay behind the provide support to the Hunshelf Singers

The Mayor of Barnsley Jeff Ennis and his wife also attended and stayed for several hours, complementing the Parish for the party, which in his opinion was an excellent example of 'whole community

involvement'

As in previous years, the event was supported financially by an award from the Parish Council, however this year we were also fortunate to have received funding support from the Tesco Bags of Help awards scheme to the tune of £1000. After meeting all our costs for the 2017 party, we will carry forward a surplus, which means we can now plan for the 2018 event which is already fully funded.

One other benefit of this funding position meant all fund raising we undertook on the day and leading up to the party, allowed the organisers to donate the monies raised to the Parish Yorkshire in Bloom activities in 2018.

In addition to our financial supporters, our thanks are also extended to a number of other organisations that gave their support; these include Liberty Steels, Asda Superstore Parson Cross, and

James Goldthorpe along with numerous members of the Parish who donated raffle prizes and contributions of cakes and puddings for the parties.

Finally the event would not have been as successful as it was, without our other unsung heroes the 'volunteers', who set up the venues rooms, served food and drinks, tidied up afterwards and generally kept the event flowing seamlessly and without mishap.

So thank you, to all the volunteers involved, our financial supporters and of course yourselves, the Parish Community for your attendance.

We also look forward to welcoming you all to our 2018 party, so get the date in your diary – Saturday 8th December 2018.

**Dave Rose (on behalf of the Organising Committee).**





Photography © John Kerr

## A CONCERT 'FOR THE FALLEN'



**A date for your diary:  
Waldershelf Singers -  
Saturday  
28th April 2018 at  
7.00pm in St Mary's  
Church, Bolsterstone.**

Waldershelf Singers, the long established local mixed voice choir who rehearse at the Venue Stocksbridge, will be presenting a concert. The theme is a commemoration of the centenary of the ending of World War One through

music, song and words, with all proceeds raised being donated to the Royal British Legion. Cadets representing our armed forces will be in attendance and the concert will recognise and acknowledge the significant contribution and sacrifice

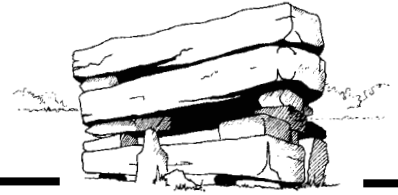
made by many local menfolk and their families'

The singers supported by their musical director, Rachel Atkinson and pianist Claire McAuley, will be accompanied by a solo baritone Simon Johnston and a guest Chamber Orchestra.

Admission will be by ticket only, prices are adults £10, under 16's free and includes refreshments. These can be purchased from Kathryn (07769252724) or by email at [bookings@waldershelfsingers.org](mailto:bookings@waldershelfsingers.org)

**If you would like any further information do not hesitate to contact Linda Rose (Chairperson) on 0114 2885779.**

# Parish Matters



## Delf Field

The contractors have been back to examine the field and in their opinion, the field is settling well. It will be much better when the grass grows and when (if) we get some dry weather and sunshine.

## Data Protection Legislation

The parish council is included in the rules and regulations for data protection. Simply, it means that the parish council may collect personal data, but we must declare what we hold and why we hold it. A first trawl through the data shows that we have email addresses for distributing the Chat, agendas and minutes. We have a list of persons invited to the Christmas Entertainment and Tea, Councillors Declarations of Interest (required by legislation). As a very small body, it is thought not to be much of problem for us, but we wait for further instructions from on high!

## Playground Safety Survey

The annual and independent survey of our playground said that all the equipment was perfectly safe. However, it also pointed out that it is possible for children to run out into the road if not carefully supervised. The parish council undertook a comprehensive review, and made a risk assessment. It was decided that we needed to place a notice on the gate alerting parents and a sign on the wall asking motorists **NOT** to park near the playground.

## Archives

Past copies of the minutes of the parish council may be found on line at our web site [hunshelfparishcouncil.org.uk](http://hunshelfparishcouncil.org.uk) and the paper copies are held in the BarnsleyMBC Archives where you may browse with pleasure. The latest set of minutes will be going to the Archives soon.

## Penistone Archives

It was agreed that the Clerk should deposit past correspondence in the Penistone Archives so that they may be kept for a longer period than in the home of the Clerk. The Penistone Archives are

open from time to time and should you wish to look around, you will be made most welcome.

## Crime

Please be aware that there has been a number of instances of crime in the parish: two cars broken into: prowlers seen in the area and the debris from cannabis growing thrown over a wall. Be vigilant and report on 101 any instances of anti-social behaviour. The more that are reported, the more chance we have of attracting some of the sparse police resources to our parish.

## Hunshelf Parish Christmas Party

To be held on Saturday 8<sup>th</sup> December 2018.


## Storage Unit

The parish council is to take delivery of a secure storage unit for the tools used by the Yorkshire in Bloom subcommittee. This will be placed in the village garden any time soon.


## David B Horsfall MBE

Clerk to Hunshelf Parish Council


**YOUR COLLECTION DAY IS TUESDAY**  
WEEK 4




Grey Bin Week



Green Bin Week  
(March-Nov)




Brown Bin Week




Blue Bin/White  
Bag Week


2018					
<b>February</b>	6 <sup>th</sup>	13 <sup>th</sup>	20 <sup>th</sup>	27 <sup>th</sup>	
<b>March</b>	6 <sup>th</sup>	13 <sup>th</sup>	20 <sup>th</sup>	27 <sup>th</sup>	
<b>April</b>	3 <sup>rd</sup>	10 <sup>th</sup>	17 <sup>th</sup>	24 <sup>th</sup>	
<b>May</b>	1 <sup>st</sup>	8 <sup>th</sup>	15 <sup>th</sup>	22 <sup>nd</sup>	29 <sup>th</sup>
<b>June</b>	5 <sup>th</sup>	12 <sup>th</sup>	19 <sup>th</sup>	26 <sup>th</sup>	
<b>July</b>	3 <sup>rd</sup>	10 <sup>th</sup>	17 <sup>th</sup>	24 <sup>th</sup>	31 <sup>st</sup>
<b>August</b>	7 <sup>th</sup>	14 <sup>th</sup>	21 <sup>st</sup>	28 <sup>th</sup>	
<b>September</b>	4 <sup>th</sup>	11 <sup>th</sup>	18 <sup>th</sup>	25 <sup>th</sup>	
<b>October</b>	2 <sup>nd</sup>	9 <sup>th</sup>	16 <sup>th</sup>	23 <sup>rd</sup>	30 <sup>th</sup>
<b>November</b>	6 <sup>th</sup>	13 <sup>th</sup>	20 <sup>th</sup>	27 <sup>th</sup>	
<b>December</b>	4 <sup>th</sup>	11 <sup>th</sup>	18 <sup>th</sup>	25 <sup>th</sup>	31 <sup>st</sup>
2019					
<b>January</b>	8 <sup>th</sup>	15 <sup>th</sup>	22 <sup>nd</sup>	29 <sup>th</sup>	



**DOWNLOAD  
OUR APP**



[barnsley.gov.uk/waste](http://barnsley.gov.uk/waste)



[facebook.com/BarnsleyCouncilHelp](https://facebook.com/BarnsleyCouncilHelp)

## Another Local Walk



### Britain's best walking neighbourhood 2018

Stocksbridge is the only Yorkshire nomination to make the 2018 shortlist for Britain's Best Walking Neighbourhood [www.ramblers.org.uk/vote](http://www.ramblers.org.uk/vote). Organised by the Ramblers, this prestigious award recognises an area where walking is the safe, pleasant and an easy way to travel. The Ramblers in the largest walkers' rights organisation in Great Britain and represents the interests of walkers.

Stocksbridge with its hills, green surrounds and many waymarked footpaths is the prime walking centre of the South Pennines. As (according to the Ramblers) the best walking area in Yorkshire it fully deserves inclusion on the shortlist and is a deserved contender for the overall accolade.

Voting takes place at: [www.ramblers.org.uk/vote](http://www.ramblers.org.uk/vote). The deadline is 14th.March 2018.

Stocksbridge Walkers are Welcome - [www.stocksbridge-walkers.org.uk](http://www.stocksbridge-walkers.org.uk)  
 Ramblers Britain's Best Walking Neighbourhood - [www.ramblers.org.uk/vote](http://www.ramblers.org.uk/vote)

Dave Pickersgill



Photo: Ian McMillan making the video

## In praise of the NHS

**We hear so much negative feedback these days about the NHS that we seldom hear the good news.**

I had first-hand experience of their first-class service when I recently accompanied a patient down to the Royal Free Hospital in London which has one of the only two pieces of specialist

equipment in Europe which is able to deal with her problem.

Not only was the NHS willing to fund our train fare (which we didn't claim) but they also provided overnight bed and breakfast, accommodation with two ensuite double bedrooms at the Premier Inn next door.

Waiting in the pleasant atmosphere of the clinic was no ordeal since the staff were so friendly and relaxed. They couldn't have been more helpful.

In the waiting area I got chatting with some of the other patients who had travelled from all over the country. One

solitary elderly lady in a wheelchair, who had no relatives, had been brought all the way from Hampshire in a hospital medicar. A man from Newcastle with poor mobility had also been brought down in a medic-car – laid on just for him. A couple from Aberdeen had flown down to London that morning. The NHS was paying for all of this – and taxi fares too!

It's easy to forget when we're waiting ages for appointments and hours in A&E that the NHS is still a great service provider. We're so lucky to have it!

Julia Thomson



## Green Moor Sports Club

**Although we still seem to be in the depths of winter the start of the cricket season is not too far away – beginning on 14th April. Our first home game will be on 21st April. We will be playing on our new level wicket area which was dug up and levelled at the end of last season. Hopefully it will be ready to play on at the start of the season.**

Again we have 1st and 2nd Saturday teams along with a Sunday side and four junior teams – U'9, 11, 13 and 15's. Both our Saturday teams were promoted last season so are looking forward to new challenges playing in higher divisions and visiting new grounds. At present practise nights are taking place at Penistone Grammar School indoor nets on a Thursday night – 7.30pm – 8.30pm. Anyone – adults, juniors male or female are welcome to come and join us.

Three of our juniors have been invited to go for coaching with the Huddersfield Taverners which is pleasing to hear. Our 5-8 year olds will be taking part in the ECB All Stars programme again this season.

Ann Matthewman  
Secretary

# What's on

Check the event websites for further information and updates

## Green Moor Church

Chapel Lane, Green Moor, Sheffield S35 7DW

**Sunday School** 9.45 - 10.45 am. We have a great time. Do give us a try; adults are welcome to stay.

**Church Service** Sunday 11 - 12am. A warm welcome awaits you.

**Mothering Sunday and each third week in the month except March, Family Service** 10 - 11am. No Sunday school on these days

## Providence Room

The following groups meet in the Providence Room (next to the church):

**Crafts, Jigsaws and Chat** Tuesdays 6.30 - 8.30 pm. If you are interested just turn up. All ages welcome.

**Baby and Toddler Group** Thursdays 9.30 - 11.30am. £2 for carer and one child; £1 for each additional child; babies free. Includes snack for children and tea/coffee and biscuits/toast for adults. Contact Brenda Mangham 0114 2882346.

**Pilates** Thursdays 6.30 - 7.45pm. Contact Nina Jolley 07796851066.

## Penistone Paramount

For details contact 01226 767532  
[www.penistoneparamount.co.uk](http://www.penistoneparamount.co.uk)

### CINEMA

**Three Billboards Outside Ebbing, Missouri** 25 February - 1 March

**Early Man** 2 - 4 March

**Journey's End** 3 - 8 March

**Finding Your Feet** 9 - 15 March

**The Shape of Water** 16 - 18 March

**The Greatest Showman Sing-Along** 18 March

**Oh, Mr Porter** 20 March

**Educating Rita** 21 March

**Shirley Valentine** 23 March

**Peter Rabbit** 24 March - 5 April

**All the Money in the World** 25 - 26 March

## NATIONAL THEATRE LIVE

**Julius Caesar** 2 March

**Messia from Bristol Old Vic** (recorded) 28 March

**Macbeth** 10 May

### LIVE

**Gimme Abba** 2 March

**Last Laugh Comedy Club** 9 March

**Penistone Ladies Choir in concert with Hade Edge Brass Band** 10 March

**Step toe and Son** 11 March

**Barnsley Muic Service - Junior Concert** 19 March

**A Night at the Movies** 19 March

**Educating Yorkshire meets Educating Rita** 24 March

**All our Yesterdays** 6 April

**Rock for Heroes** 13 April

**Crooners** 28 April

**Bolsterstone Male Voice Choir Spring concert with guests Thurgoland Brass Band** 11 May

**Swan Lake** 14 May

## ORGAN EVENTS

**Penistone Cinema Organ Trust present their Anniversary Concert** 14 April

**Phil Kensall** 12 May

## The Venue

For more information or to book please call 0114 2838692 or email us/facebook  
**The Venue Stocksbridge**

**Yorkshire Cosplay Con presents YCC Mini Con** 3 March

**Stocksbridge Community Forum open day** 4 March

**Stageflight Comedy Club presents Gary Delaney** 10 March

**Indoor Car Boot** 17 March

**Valley Music Festival** 24 March

## Wortley Hall

For details contact 0114 288 2100  
[www.wortleyhall.org.uk](http://www.wortleyhall.org.uk)

**Mothers Day** 11 March. A relaxing three course carvery lunch this Mother's Day. All Mums will receive a special gift.

**Gin Tasting Dinner** 16 March and 18 May. Wortley Hall has teamed up with Le Bon Vin to bring you a fantastic evening of food and Gin tasting!

**Sunday Special** 18 March and 8 April. Two course Sunday Lunch for 2 people and B&B in a double room for just £75.

**Easter Sunday Carvery** 1 April.

**Spring Wine Tasting Dinner** 27 April. Wortley Hall has teamed up with our wine merchant, Le Bon Vin, to bring you a fantastic evening of food and wine tasting.

**President's Dinner** 11 May.

**Spring Garden and Craft Fayre** 13 May

## Stocksbridge Leisure Centre

For details contact 0114 2883792 or visit [www.stocksbridgeclc.co.uk](http://www.stocksbridgeclc.co.uk)

A wide range of leisure activities including badminton, squash, racketball, indoor bowls, martial arts, gymnastics, trampolining, indoor football, basket/net ball and more. Open 7am-9pm weekdays, 8am-5pm Saturday and 8am - noon Sunday.

### Swimming

The leisure centre has a large and small pool. Go online or contact the centre for pool timetables (including sub aqua and zorbing) and membership schemes.

## Penistone Community Centre

**Penistone S36 6AR**

**Penistone Farmers' Market**

Penistone Market, second Saturday of every month.

## Civic

Want to know what's going on? Go to [www.barnsleycivic.co.uk](http://www.barnsleycivic.co.uk) or check out the facebook site @barnsleycivic

## Miscellaneous

**Holmfirth Farmers' Market**

Third Saturday of every month.